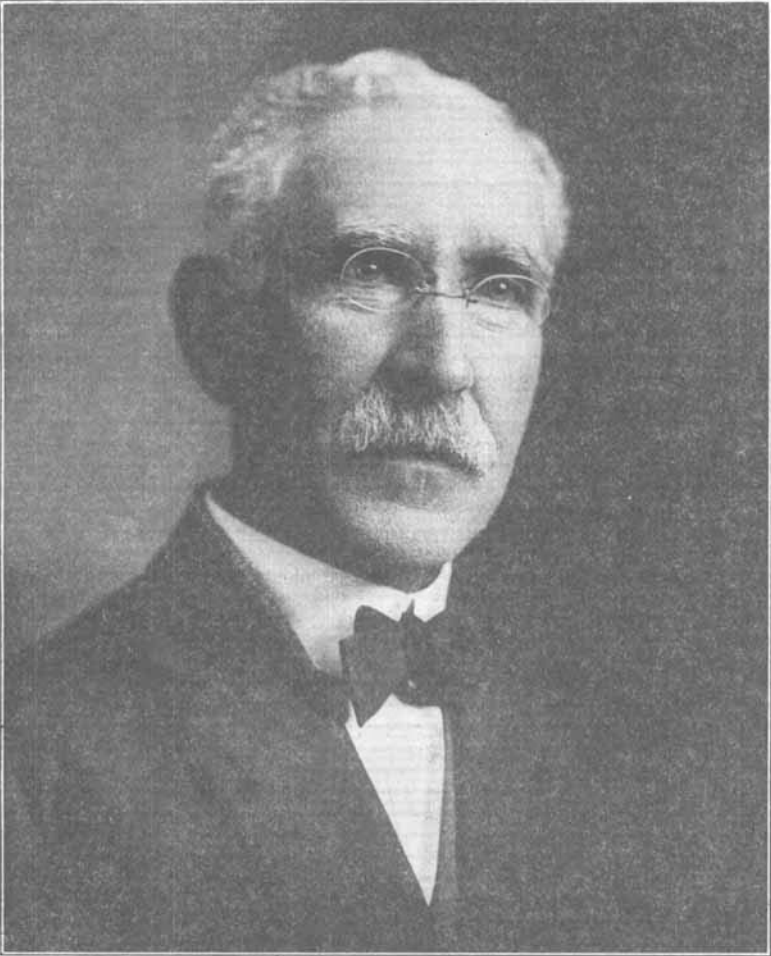


LUCIUS E. SAYRE
LAWRENCE, KANS.

President-Elect American Pharmaceutical Association



L. E. SAYRE

JOURNAL OF THE AMERICAN PHARMACEUTICAL ASSOCIATION

VOL. VIII

JANUARY, 1919

NO. 1

LUCIUS ELMER SAYRE.

L. E. Sayre, president-elect of the American Pharmaceutical Association, was born at Bridgeton, N. J., seventy-one years ago. Here he received his early education and also served for a time in the drug store of Robeson & Whitaker. In an article contributed to the Section on Historical Pharmacy, A. Ph. A., Professor Sayre interestingly related the experiences of an apprentice of the early Sixties in New Jersey.¹ Ambitious to learn more of the many things he had become acquainted with and to acquire a scientific knowledge of pharmacy, he decided to attend the Philadelphia College of Pharmacy, and like most pharmacy students of that period engaged as clerk in a drug store,—that of Dr. L. Updyche, at 12th and Fairmount Ave. After graduation from the College in 1866 he was employed in the laboratory of Frederick Brown, at 5th and Chestnut Streets. Succeeding this period he was engaged by Henry C. Blair's Sons as chief clerk, and served in this capacity for ten years, when he enlisted in the drug business for himself at 18th and Market Streets, forming a partnership with his friend and classmate, the late Prof. Joseph P. Remington. During these years he also was lecturer in Pharmacy at the Women's Medical College and quiz-master in *Materia Medica* at the Philadelphia College of Pharmacy.

In 1885 the Kansas Legislature passed an Act creating the School of Pharmacy, thereafter located at the State University; the Board of Regents elected the subject of this incomplete sketch dean of the School and professor of *Materia Medica* and of Pharmacy. At present Professor Sayre devotes his time to the former subject and administrative work, as dean. The School of Pharmacy was given a home in the Chemistry and Pharmacy building in 1899. Since the school was founded over two thousand students have matriculated and about five hundred have been graduated as pharmacists. In 1907 Professor Sayre was elected director of drug analysis for the Kansas State Board of Health and he is also member of the botanical staff of the Kansas State Board of Agriculture. As an author he is best known by his contributions to pharmaceutical publications, proceedings

¹ JOURNAL A. PH. A., 6, 454.

of State and National associations and his text-book on Organic Materia Medica and Pharmacognosy. He has been a member of the last three Revision Committees of the U. S. Pharmacopoeia. He received the degree of Master in Pharmacy from the Philadelphia College of Pharmacy, and the University of Michigan honored him with the degree of Bachelor of Science in 1896.

The president-elect joined the American Pharmaceutical Association in 1883, and has served on important committees, among these that on Drug Reform. He was chairman of the Scientific Section in 1893, secretary of the Section on Historical Pharmacy in 1917, and its chairman at the recent Chicago meeting.

The Proceedings of the American Pharmaceutical Association and the pages of the JOURNAL of the A. Ph. A. have reported the contributions of this enthusiastic worker in pharmacy. The subjects are various and relate to teaching in its various phases, historical, theoretical and practical pharmacy, organic chemistry, botany and pharmacognosy. All of these contributions evidence the earnestness of a careful and thorough student and, as the subjects have relative value, it may not be presumption on the part of the writer to make special reference to his work on Gelsemium which was presented in papers to the Scientific Section from 1905 to 1915.

As heretofore indicated, no attempt is made in this writing to present a complete sketch, realizing that the members are well acquainted with the labors of the man whom they have been pleased to honor with the presidency of the American Pharmaceutical Association for 1920-1921.

Professor and Mrs. Sayre, nee Miss Ellen Platt, were married in 1874; the former has missed but very few of the annual conventions since his affiliation, and the latter is a frequent visitor. They have two sons and two daughters, all of whom have their own family circles. A number of years ago the Sayres selected a summer residence in Douglas, Mich., and very soon after the annual school term is completed this is home for them.

E. G. E.

AN ACKNOWLEDGMENT OF THE HONOR CONFERRED BY THE A. PH. A., FROM THE PRESIDENT-ELECT.

To the Members of the American Pharmaceutical Association:

I was surprised and gratified to receive the notice of my election to the presidency of the American Pharmaceutical Association. I wish to assure the members of the Association that it gives me much pleasure to receive this high honor, and welcome it not only as an expression of their confidence but also as an added responsibility; not without misgivings, however.

During the present year President Charles H. LaWall has the care of the Association, and never before has this body been so much in the public eye. A consciousness of this fact and that there will be many post-war problems to face, brings the realization to me that I will need not only the present incumbent's aid but that of all the members of this Association, when I assume the duties of office.

(Signed)

L. E. SAYRE.
